

FOR THE CONFIDENTIAL ATTENTION OF MILGOO MINE WEB SITE VISITORS

# MILGOO MINE

---

## Mount Magnet Mining District

Prepared by N S and I J McNally

MARCH 2023



*A description of mining activity at the Milgoo Mine, Paynesville, Mount Magnet District from 1932 until March 2023. Presenting a very real and positive case for the recommencement of development and gold production activities at the Milgoo Mine site.*

# MILGOO MINE

*located within*

**Mount Magnet District**

*and the*

**Paynesville/Windsor - Mining Centre**

This document has been prepared by  
N S McNally ADipVal, GDipProp, Mst.Proj.Mgt.  
in conjunction with  
Ian John McNally, PO BOX 501, MOUNT MAGNET,  
the current holder of Mining Lease 58/362,  
described as the Milgoo Mine, granted 20th August 2018.

*Contact Details:*

N S McNally

Email: [milgoomine@optusnet.com.au](mailto:milgoomine@optusnet.com.au)

Mob: 0401 864 187

I J McNally

Email: [milgoo@activ8.net.au](mailto:milgoo@activ8.net.au)

Mob: 0418 918 341

Direct Line: (08) 9904 9911

**Face page photo: Gold sample from small crushing and panning at Milgoo Mine**

## CONTENTS

<b>1.0 MILGOO MINE AND PAYNESVILLE MINING CENTRE .....</b>	<b>4</b>
<b>2.0 MILGOO MINE LOCATION .....</b>	<b>5</b>
<b>3.0 PRIMARY PEOPLE RELATED TO EARLY ACTIVITY .....</b>	<b>5</b>
<b>4.0 MILGOO MINE GOLD PRODUCTION .....</b>	<b>7</b>
<b>5.0 AN EARLY GOLD MINING FACT? .....</b>	<b>9</b>
<b>6.0 MILGOO MINE CHRONOLOGICAL ORDER OF LEASES .....</b>	<b>9</b>
<b>7.0 MILGOO MINE FUTURE .....</b>	<b>10</b>
<b>8.0 CURRENT MILGOO MINE DETAILS .....</b>	<b>11</b>
8.1 MINING LICENCE 68/362 DETAILS .....	11
8.2 MILGOO MINE LOCATION .....	12
8.3 DEPARTMENT OF MINES LOCATION OF MILGOO MINE .....	13
8.4 MILGOO MINE GOOGLE MAP - CORRECT COORDINATES .....	14
<b>9.0 MILGOO MINE.....</b>	<b>15</b>
9.1 PAST ACTIVITY 1930s .....	15
9.2 MOST RECENT ACTIVITY .....	17
<b>10.0 STATUTORY DECLARATION .....</b>	<b>18</b>
<b>ATTACHMENTS 1.0 TO 5.0 .....</b>	<b>19</b>
1.0 GOVERNMENT GAZETTE, W.A. MAY 8, 1936 .....	19
2.0 DEPARTMENT OF MINES PRODUCTION TABLES.....	20
3.0 WESTERN ARGUS MILGOO MINE PRODUCTION 1936.....	23
4.0 GERALDTON GUARDIAN PAYNESVILLE PRODUCTION 1937/39.....	24
5.0 DAILY TELEGRAPH GOLD P.A.'S GRANTED 1942 .....	25
<b>ATTACHMENT 6.0 .....</b>	<b>26</b>
STATUTORY DECLARATION BY OWNER OF MINING LEASE M58/362 .....	26
<b>FURTHER NOTES .....</b>	<b>27</b>
1.0 MOSES FAMILY .....	27
2.0 REFERENCES AND SOURCES USED IN RESEARCH.....	27
3.0 SONS OF GWALIA MINE PLAN 1930 (DEPARTMENT OF MINES ANNUAL REPORT 1930).....	28

# MILGOO MINE

located within

**Mount Magnet District**

and the

**Paynesville Mining Centre (Windsor Area)**

## 1.0 Milgoo Mine and Paynesville Mining Centre

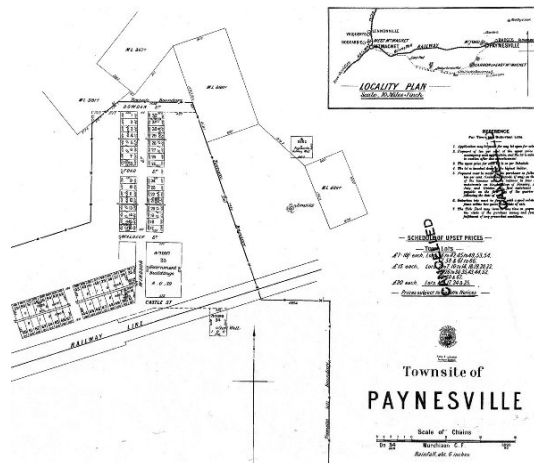
**T**he once active, but now non-existent, Townsite of Paynesville is/was located about 77 kilometres east of Mount Magnet on the Mt Magnet/Sandstone Road. Paynesville was also the major stop for the railway that once ran from Mt Magnet to Sandstone.

### PAYNESVILLE

Latitude 28° 01' S Longitude 118° 30' E

An abandoned goldfields townsite, Paynesville is located 646 km north east of Perth and 77 km east of Mount Magnet. Gold was discovered in this area in early 1898 by Tom Payne and Waldeck, and by April 1898 the place had been inspected by a surveyor and a plan of subdivision prepared. It was at first referred to as "Paynton", and East Mount Magnet, and some records record the locality as "Fords" after another prospector.

By April 1899 local prospectors were using the name Paynesville, and it was with this name that the townsite was gazetted in 1900. It is believed to be named after Tom Payne. The railway from Mount Magnet to Black Range, passing through Paynesville, was opened in 1910.



Subdivision plan for the Town site of Paynesville.

Search LINK: [http://www.outbackfamilyhistory.com.au/records/record.php?record\\_id=487](http://www.outbackfamilyhistory.com.au/records/record.php?record_id=487)

The mining activity around the Paynesville Town site was/is known as Murchison Goldfield - Mt. Magnet District, Mining Centre-Paynesville.

Historical publications, referred to below, show production activity for the Paynesville Mining Centre and that includes notes for production from the Milgoo Mine.

## 2.0 Milgoos Mine Location

The Milgoos Mine, which has also been referred to as the 'now lost locality of Milgoos Reward Find', is located about 12.0 kilometres north-east of the old Paynesville Townsite.

"In 1934, Western Mining Corporation took over seven leases at a now lost locality named Millgoos Reward Find (sic), about 12 kilometres north-east of Paynesville. They also took over the old Windsor Castle Consolidated group of leases. Millgoos was owned by Arthur Moses, who had been active on the field in the 1890's, while Windsor was owned by A.G. Moses junior."

Quote from: <https://www.mindat.org/loc-264877.html>

(Western Mining Corporation (WMC) was formed on 2 March 1933: [https://en.wikipedia.org/wiki/WMC\\_Resources](https://en.wikipedia.org/wiki/WMC_Resources))

The takeover referred to above was probably an 'option to purchase' as this was the nature of WMC's activities in their early days.

"The 1930s and prewar 1940s saw Robinson's companies - *being Western Mining Corporation* - complete substantial exploration, acquisition, and development of mining properties throughout Australia. Some of these mines were brought into production. Nevertheless, the companies struggled to survive because financing was difficult to secure during the Great Depression. In 1935, gold prices again fell; making it even more of a problem to secure needed financing. By the time most operations were mothballed for the duration of Australia's mobilization for World War II, the companies operated ten producing mines, but those mines had not yet generated significant profits."

LINK to Reference: <https://www.referenceforbusiness.com/history2/74/WMC-Limited.html>

So it appears Western Mining Corporation allowed Arthur Gilbert Moses Senior to continue operation at the Milgoos Mine through the latter part of the 1930's (according to the WA Department of Mines production publications) and eventually A G Moses Jnr. was granted a Gold P.A. in 1942 - see detail below.

The consequence of this series of events was that the Milgoos Mine has never been brought to its full production potential. As a further consequence the actual location of the Milgoos Mine had been lost in the consciousness of the general mining public until recently revived by the current owner of the newly granted Mining Lease 59/362 - Mr I J McNally.

## 3.0 Primary People related to early activity

MOSES, Arthur Gilbert (Senior) b. 1866. Linton, Victoria Died 1941 Mt Magnet, WA (75 years)

See Further Notes below: 1.0 MOSES Family

**MOSES** , Arthur Gilbert. 4 Aug 1970 aged 69 (with Florence)

**MOSES** , Florence Ethel. 7 Nov 1969 aged 66 (with Arthur)

Information from Geraldton Cemetery

LINK: [http://www.ozburials.com/CemsWA/Geraldton-Greenough/geraldton\\_f-m.htm](http://www.ozburials.com/CemsWA/Geraldton-Greenough/geraldton_f-m.htm)

During 1936 Arthur Gilbert MOSES Senior ("AGMS") was registered as the proprietor of the mining lease 1245M - MILGOOS MINE.

*Government Gazette WA May 8 1936*

ni,	<i>Mt. Magnet District.</i>
g,	Gold Mining Leases.
e;	
li,	1242M--LUCKY HIT: Dallison, Frederick Henry.
	1245M--MILGOO MINE: Moses, Arthur Gilbert (sen.).
	1251M--BROKEN BOND: Crick, John Thomas; Hud-
	son, Sidney John.
iy.	1255M--EDWARD CARSON: Cassey, Andrew; Cassey,

Florence Ethel MOSES ("FEM") was registered as the proprietor of mining lease 1325M - WINDSOR CASTLE. *See Attachment 1.0*

Florence was the wife of Arthur Gilbert Moses Jnr. ("AGMJ") (The Arthur Gilbert Jnr. was probably Arthur George. There was also a Gilbert Owen - brother 1898 - 1975.)

See Further Notes below: 1.0 MOSES Family

The Daily Telegraph and North Murchison and Pilbarra (*sic*) Gazette on 21 November 1942 reported. *inter alia*, that a Gold P.A. (*Prospecting Area*) had been granted to Arthur Gilbert Moses that being 2964M at Milgo Hill. As Arthur Gilbert Moses Senior had passed the year before, this notification may have been a grant of the former Milgo Mine lease area to the son.

**Gold P.A.'s Granted**

Thomas William Hesford, 2320,  
at Leake's Find  
Adam Marchei, 2321, at Gooding-  
now  
Horace Jewell, 2962M, at Boogardie  
Arthur Giloert Moses, 2964M, at  
Milgo Hill  
Jackom Della Bona, 2965M, at  
Magnet  
Amelia Ann Males, 2963M, at  
Lennonville

*See Attachment 5.0*

There has been no evidence found of any official production from 2964M Milgo Hill.  
*Check for further ownership proof/activity during the 1950's*

It is possible that spasmodic but small mining activity took place at the Milgo Mine up to the late 1950/60s, although no official evidence has been found to confirm any activity. However, the recent discovery in one of the Milgo Mine short drives of a newspaper covering some unused explosive fuses, situated next to a rusted container of fully sweated gelignite sticks, revealed that the last activity within the Milgo Mine shafts was probably around 4th September 1959. That was the date of publication of the newspaper. (The remnants of the fuses and gelignite were successfully and properly disposed of by way of the services of an authorised explosives disposal expert and one all mighty big bang.)

#### 4.0 Milgoos Mine GOLD PRODUCTION

The *WA Department of Mines Report* of circa. 1939/40 or the *WA Government Gazette* of circa. 1939/40 reported, in a summary of WA Mining Production, the gold production from the Mining Centre of Paynesville for the *period 1932 to 1939*. The Mining Lease numbered 1245M, Milgoos Mine production was reported as follows:

<i>Murchison Goldfield - Mt. Magnet District</i>	
<i>Mining Centre</i>	<i>Paynesville</i>
<i>No. of Lease</i>	<i>1245M</i>
<i>Name</i>	<i>Milgoos Mine</i>
<i>Ore Treated</i>	<i>220.50 tons</i>
<i>Gold Produced</i>	<b><i>527.07 ounces</i></b>
<i>Production Period</i>	<i>1932-39</i>
<i>See Attachment 2.0</i>	

In today's AUS Gold price at \$2,950.64 (30/03/2023 1430 Hrs) per ounce the value of the 1932/39 production from the Milgoos Mine would be \$1,555,193.80

Over 6 or 7 years that equates to about \$222,170 - \$259,200 per annum. That annual sum, in contemporary mining thought, is probably a reasonable income for what would be a one or two man mining operation. Who knows what might have been produced during the 1932/39 period if the Milgoos Mine operation had been ramped up to a more significant operation.

It appears that the early operation at the Milgoos Mine involved the sinking of a series of shafts by one or two men. There is currently no evidence that mining activity was expanded to any form that included large machinery or any large number of employees. There is a concrete base that may have been used for a winch of some description or a donkey pump.

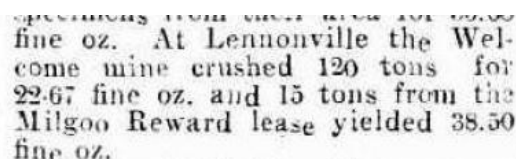
Mining Lease 340M Windsor Castle in 1898 produced 13.04 Oz of gold from 4.7 tons. (See Attachment 2.0) That equates to 2.77 ounces per ton. Milgoos Mine as a small operation produced 527.07 oz. or 2.39 oz per ton during 1932 to 1939.

On the 1st December 1936, the Western Argus newspaper reported that the Department of Mines had released the following notes:

"At Paynesville a prospecting battery was completed on the Milgoos Mine and 15 tons were treated for 42.57 fine oz."

That equates to 2.84 Oz per ton which is a little higher than the overall 1932/39 results.

The same production details were reported in the Kalgoorlie Miner on 11 December 1936.



specimens from which were 22.67 fine oz. At Lennonville the Welcome mine crushed 120 tons for 22.67 fine oz. and 15 tons from the Milgoos Reward lease yielded 38.50 fine oz.

In the above extract, the Milgoog Mine is referred to as the '*Milgoog Reward lease.*' Note that the Welcome Mine had to crush 120 tons to produce 22.67 fine oz. Milgoog Reward produced 38.50 fine oz. from 15 tons.

It would appear that the Milgoog Mine operation during the period 1932 to 1939 was not a period of full time production. Much time would have been spent setting up the site, prospecting battery and other required facilities.

Further, the Department of Mines Annual Report to the WA Parliament for 1936 reported as follows:

Paynesville	1342*	Lady Mount	71.40	18.48		71.40	18.48
	1245*	Milgoog Mine	40.00	118.21		180.20	484.48
		Voided leases				97.27	240.10
		Sundry claims	3.96	1.84	119.40	36.08	
					3.96	524.83	749.07
							1,222.01

1936 Annual Report p.137 *details*

Murchison Mount Magnet District Mining Centre Paynesville

1245M Milgoog Mine 1936 Ore Treated 40.00 tons Gold there-from Fine ozs: 118.21 (2.96 ozs per ton.)

Total Ore Treated 180.50 tons Gold there-from Fine ozs: 484.48

Arthur Gilbert Moses, at the age of 67 years, extracted and processed 40 tons of ore that produced 118.21 ozs of fine gold. Not a bad effort for an elderly gentleman.

The Geraldton Guardian and Express, 31 January 1939 reported production from Paynesville for 1937 and 1938.

**Paynesville—1937, 172½ tons for 63.95 ounces; 1938, 49 tons for 22.00 ounces.**

See Attachment 4.0

It is likely that the majority of the 1937 - 1938 production may have come from the Milgoog Mine as by 1939 operations in the Paynesville area would have seriously receded. (The WWII war effort was getting into full swing as noted with the WMC comments above.)

**Paynesville—Mining at this centre was very quiet, and the production was the lowest for many years. The principal producer was the Milgoog Gold Mine, owned by Mr. A. G. Moses, sen., from which 18.76 fine ounces of gold were won from the treatment of 30 tons of ore and 40 tons of sands.**  
**Wynyangoo—This centre again yielded some exceptionally rich returns to prospectors searching for the small but rich leaders in the locality. During**

Search LINK: 1939: <https://trove.nla.gov.au/newspaper/rendition/nla.news-article67259290.3.html?followup=855ba7e3a4d0dddf5d1a2fc0a7751&print=true>

In 1939 it was confirmed that at the Paynesville Mining Centre '... the principal producer was the Milgoog Gold Mine owned by Mr A. G. Moses, *Senior.*'



The 1939 Department of Mines Report shows that production at the Milgoo Mine ceased during or just before that year. From 1940 onwards the Annual Reports do not mention mining lease 1245M Milgoo Mine. The cessation of mining activity by Arthur Gilbert Moses in 1939 is confirmed later when the overall chronological order of the Department of Mines mining authorities is reviewed.

## 5.0 An Early Gold Mining Fact?

Quote from report of WA Government Geologist in assessing various areas within the Ashburton Gascoyne areas for potential and then current mineral production. (Report of the Department of Mines 1919 to the WA Parliament.)

In all probability the official returns fall far short of the actual amount of gold won, as in the early days of mining prospectors seldom reported the amount of alluvial gold they obtained, and as they disposed of it through various channels, the official returns probably represent only that portion that was sold to the banks.

It may also be probable that the total gold production reported for the Milgoo Mine and surrounding mines may have been much higher than those figures published over the years.

## 6.0 Milgoo Mine Chronological Order of Leases

MILGOO MINE - AREA Historical Details from the Department of Mines

### **GML 1245M Milgoo Mine** - Milgoo Reward Find

The original lease under the WA Mining Act 1904 was the Gold Mining Lease 1245M. This lease ran from 1933 to 1939 when it was surrendered. 1245M Gold Mining Lease was owned and operated by Arthur Gilbert Moses Senior. A G Moses was 70 years of age when he ceased production at the Milgoo Mine. At that time the Milgoo Mine was the biggest gold producer in the Paynesville Mining Centre. Milgoo Mine gold production during 1930's was significant with high rates of fine ounces per ton compared to other mines in the Western Australian gold fields. (See Dept. of Mines Tables Attachment 2.0)

### **PA 2860M** 1941/42 and **PA 2964M** Milgoo Hill 1942/43

The prospecting area 2964M was granted to Arthur Gilbert Moses Jnr. No production activity was noted as a result of these PAs. The time was in the middle of WWII.

### **PA 3630** 1959/60

This short lived prospecting area grant again recorded no production but there was evidence found much later that there must have been something going on. A newspaper dated 4th September 1959 was found in a shaft about 53 years later along with some very old fuses and a rusted container of fully sweated gelignite. The fuses and gelignite were disposed of appropriately.

### **GML 58/1245M** 1974 3mths (*check*)

This GML ran for three months. There must have been some incentive for this party to pursue a GML from the Department of Mines.

**PA 4160 1979/80**

This prospecting area was the forerunner to the following Mining Licence.

**M58/2048 1981 to 1990**

Issued to a Mr. Brockhoff. The current Mining Lease holder interviewed Mr. Brockhoff about the extent of work he may have undertaken at the Milgoos Mine. Apparently, Mr. Brockhoff undertook very little productive work over the years from 1981 to 1990. Although expenditure was probably in accordance with the mining lease conditions, the area was mainly used for the storage of some machinery that was intended to be used in more productive mining activity. Certain unfortunate events caused Mr Brockhoff to lose focus on the potential production from the Milgoos Mine.

**P 58/1487 3rd September 2010 - 2018 Prospecting Licence**

This prospecting licence was issued to the current Milgoos Mine Mining Lease owner Mr. I J McNally

**M58/362 Current 20/08/2018 expiry 19/08/2039**

The current Milgoos Mine mining lease owner fully intends to maximise the potential gold production capability of the mine. If production figures are anything like those achieved by Arthur Gilbert Moses Snr. during the 1930s the future of the Milgoos Mine is assured. 1930's gold production figures, if achieved today, will make the Milgoos Mine an extremely important contemporary gold find.

Since 1939, nothing of substance, production or development wise, has occurred at the Milgoos Mine (the long lost Milgoos Reward Find). It is entirely possible that the production rates achieved by Arthur Gilbert Moses are still achievable today. If it was not for Mr Moses retiring at the age of seventy years, one will never know if the Milgoos Mine might have been another Sons of Gwalia or similar, unless an attempt is made to reveal the true and ongoing gold productivity of the Milgoos Mine. (See *Sons of Gwalia Mine Plan sketch* at Further Notes Item 3.0 at the end of this document.)

The Milgoos Mine is now ready for the commencement of full development and production activity.

## **7.0 Milgoos Mine Future**

The following pages give overall information regarding the location of the Milgoos Mine and some past and recent activity. The scatterings of small gold recently found on the surface of the Milgoos Mine lease area along with the obvious determination of the first Milgoos Mine owner, Arthur Gilbert Moses, to follow the substantial NW-SE quartz seam or vein, indicate that there may be potential for a very serious and productive mining operation to be developed at the Milgoos Mine in the near future.

This document attempts to detail the history of the Milgoos Mine located in the Paynesville Centre, Mount Magnet Mining District. The Milgoos Mine was very productive during the 1930s. Unfortunately, or maybe fortunately, operations at the Milgoos Mine ceased during 1939 as a result of the oncoming World War II and the aging of the proprietor of the mine. No activity of substance has occurred at the Milgoos Mine since 1939. The opportunity to test the full gold production capability of the Milgoos Mine now presents itself. The current holder of the Milgoos Mine Lease is prepared to negotiate with interested parties in order to see that the developmental opportunity at the Milgoos Mine commences.

## 8.0 Current Milgoos Mine Details

### 8.1 Mining Licence 68/362 Details



Government of Western Australia  
Department of Mines, Industry Regulation and Safety



## MINING TENEMENT SUMMARY REPORT

**MINING LEASE 58/362**

Status: Live

### TENEMENT SUMMARY

Area: 9.71320 HA      Death Reason :  
Mark Out : 04/05/2018 13:00:00      Death Date :  
Received : 09/05/2018 12:15:00      Commence : 20/08/2018  
Term Granted : 21 Years      Expiry : 19/08/2039

### CURRENT HOLDER DETAILS

#### Name and Address

MCNALLY, Ian John  
IAN JOHN MCNALLY, PO BOX 501, MOUNT MAGNET, WA, 6638, xxxxxx@activ8.net.au, xxxxxxx341

### DESCRIPTION

**Locality:** Milgoos Mine  
**Datum:** Datum situated at South East corner of late surveyed  
GML 58/1245  
**Boundary:** Boundaries identical to late surveyed GML 58/1245

Area :	Type	Dealing No	Start Date	Area
	Granted		20/08/2018	9.71320 HA
	Applied For		04/05/2018	9.71320 HA

### SHIRE DETAILS

Shire	Shire No	Start	End	Area
MOUNT MAGNET SHIRE	5810	04/05/2018		9.71320 HA

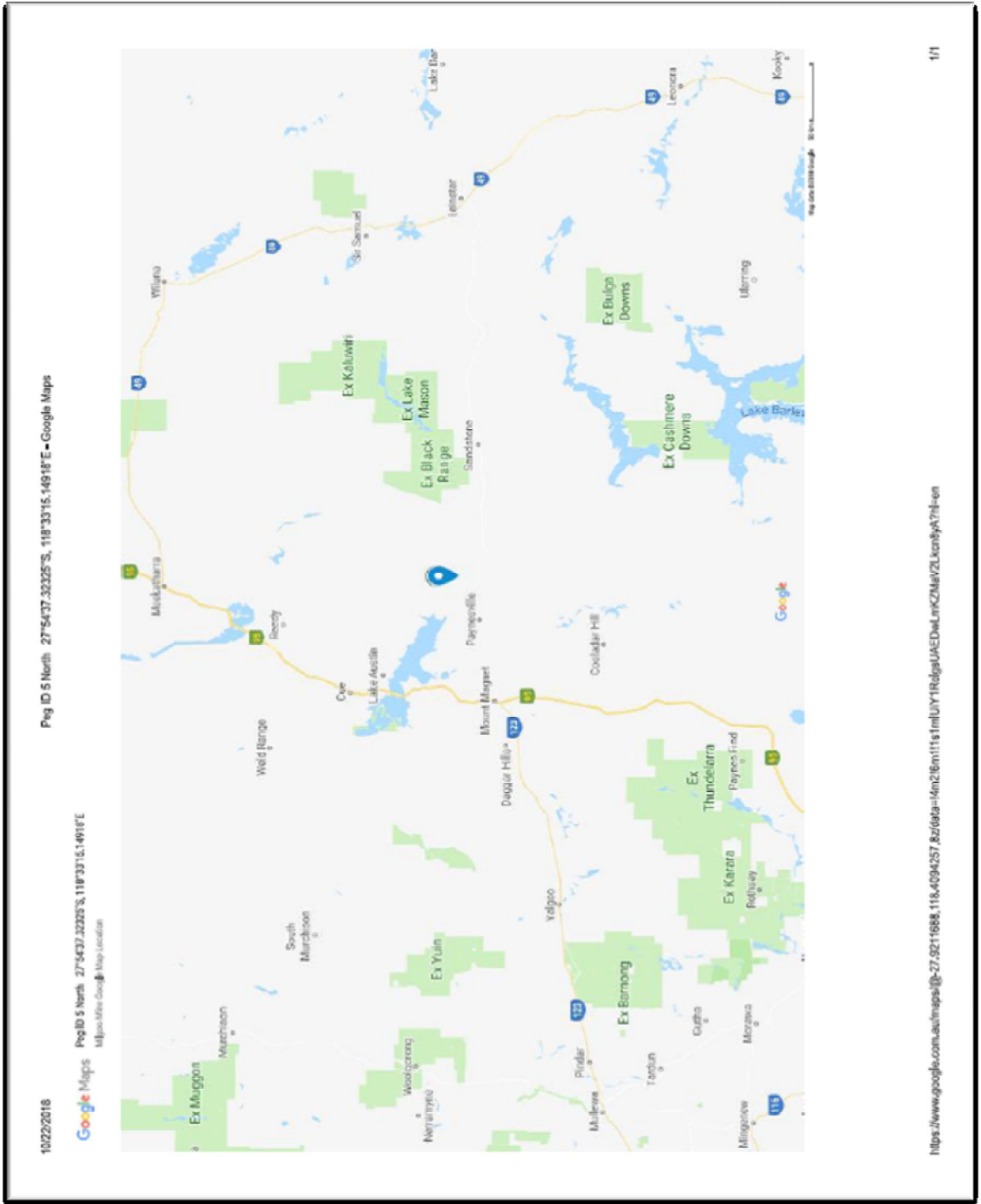
### RENT STATUS

Due For Year End 19/08/2019: PAID IN FULL  
Due For Year End 19/08/2020: \$187.00

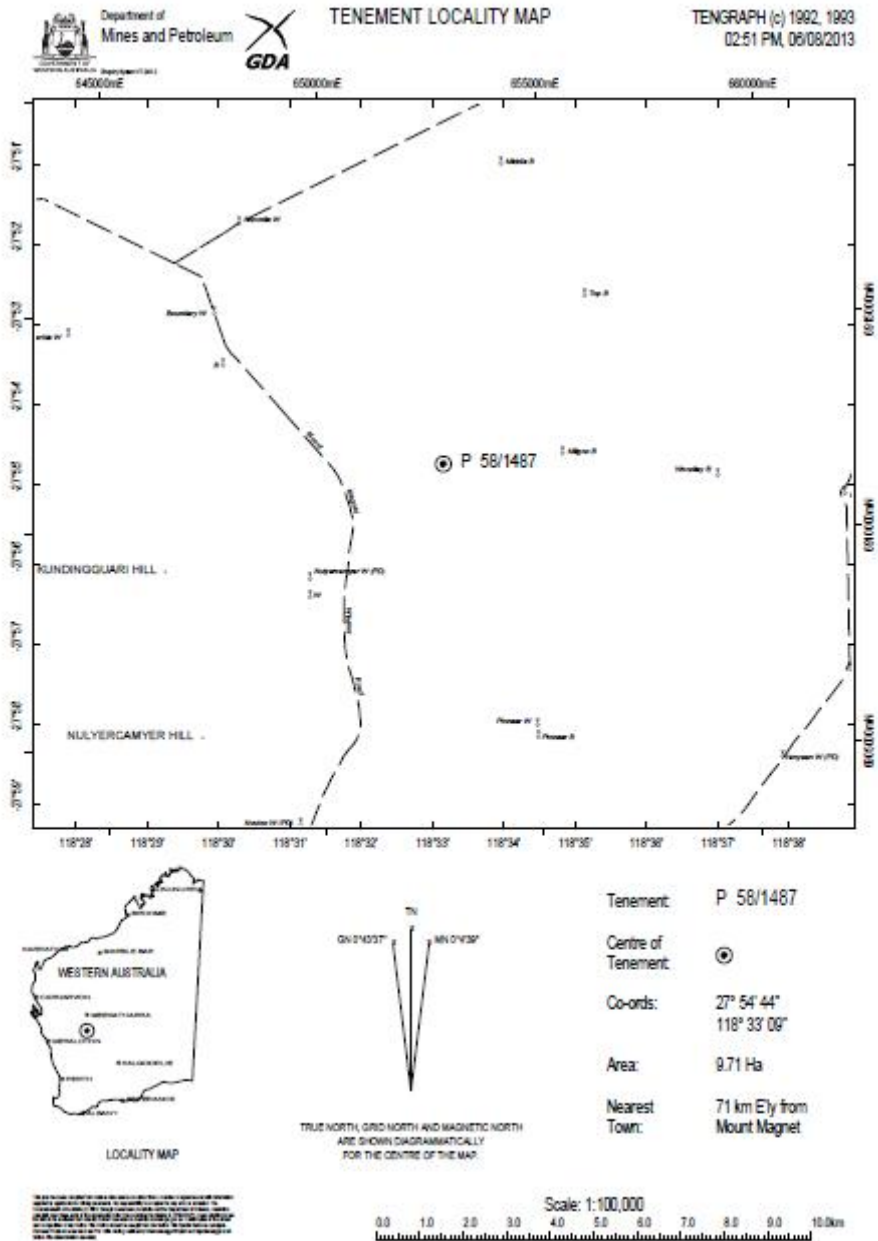
### EXPENDITURE STATUS

Expended Year End : N/A  
Current Year Commitment : \$10,000.00

## 8.2 Milgoo Mine Location



### 8.3 Department of Mines Location of Milgoo Mine




## 8.4 Milgoo Mine Google Map - correct coordinates

# MILGOO MINE

M 58/362 Milgoo Mine Survey  
Peg Layout


  
27°54'48.58677"S,  
118°33'22.61415"E

  
Peg ID 2 South  
27°54'52.56735"S,  
118°33'15.00576"E

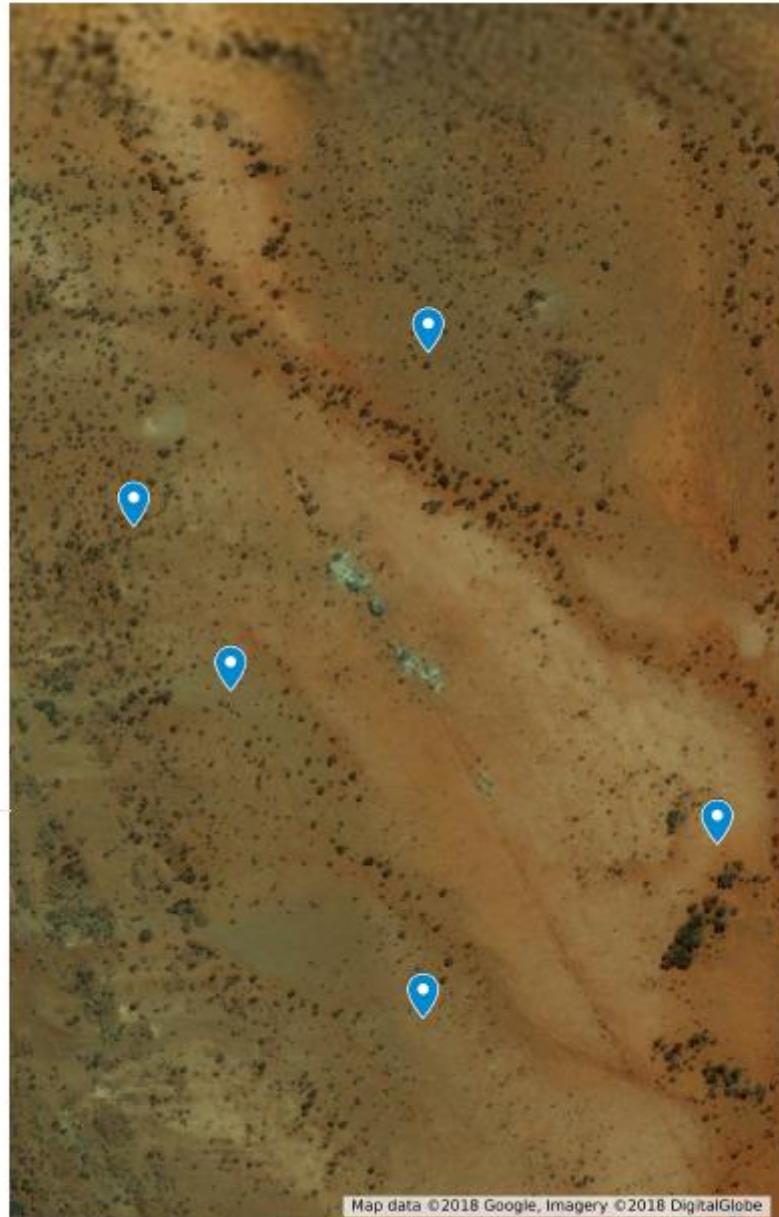
  
Peg ID 3 South West Mid  
27°54'45.06625"S,  
118°33'10.03404"E

  
Peg ID 4 West  
27°54'41.30304"S,  
118°33'7.53989"E

  
Peg ID 5 North  
27°54'37.32325"S,  
118°33'15.14918"E

  
Peg ID 1 and 6 East  
27°54'48.58677"S,  
118°33'22.61415"E

Milgoo Mine Location and  
Survey Information



Old workings can be seen in the middle of the lease area. There are eight shafts from prior work at the Milgoo Mine. The shafts follow an alignment from the NW to the SE. This appears to be the alignment of the quartz seam that the progressive works were following. There are also drives that run away from some of the shafts. The full extent of the development of the early drive works is not yet known.

## 9.0 Milgo Mine

### 9.1 Past Activity 1930s



Was this the stove belonging to Arthur Gilbert Moses the original owner of the Milgo Mine?



These shafts were surely constructed by A G Moses Senior during the 1930s.



These two shafts were constructed during the 1930s. One has been framed at the surface more recently and the other has had concrete liners placed by the current owner.



Sections of the quartz seam that has been followed by the 6 or 7 shafts constructed by A G Moses.



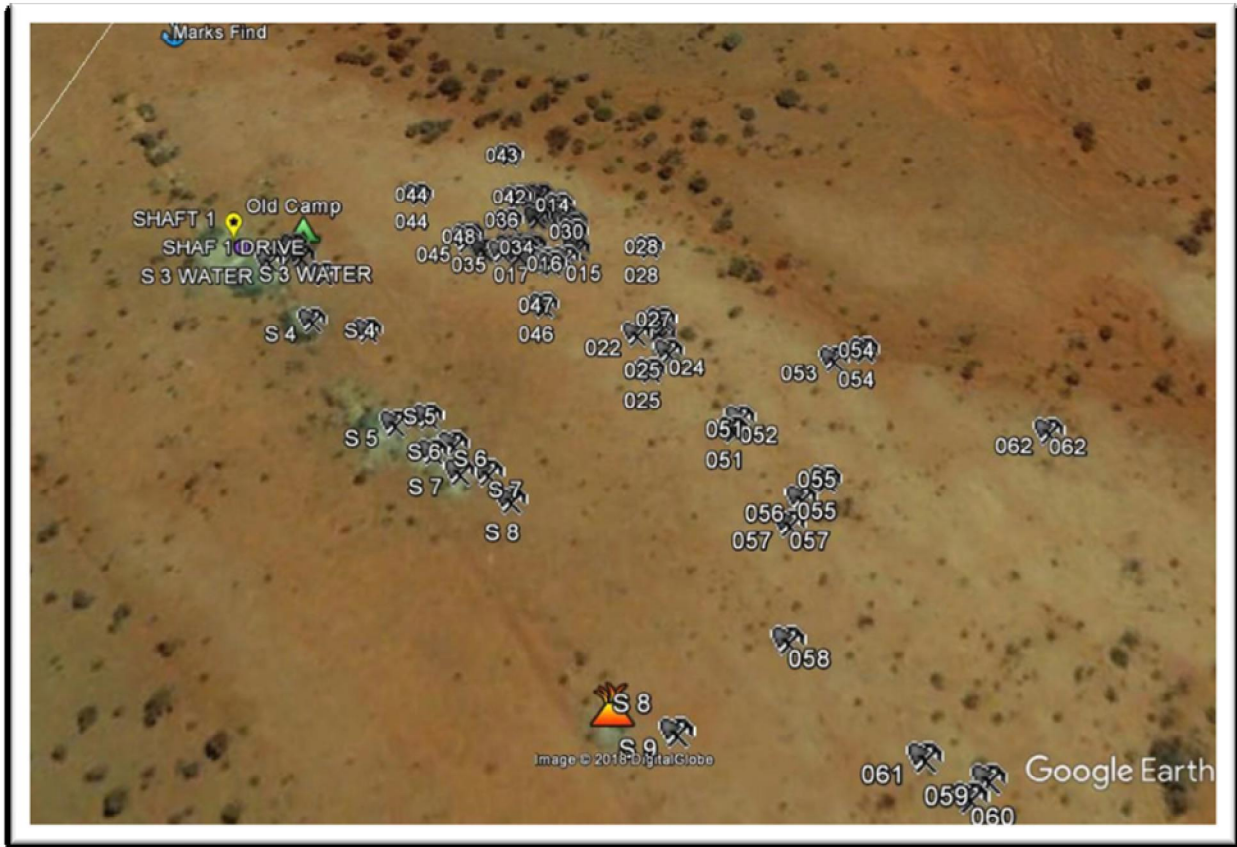
Some of the spoil from early mining that, if crushed and processed, might reveal significant gold content.



Current lodgings at the Milgoo Mine constructed by the current owner.



**Milgoo Mine**  
**9.2 Most recent activity**

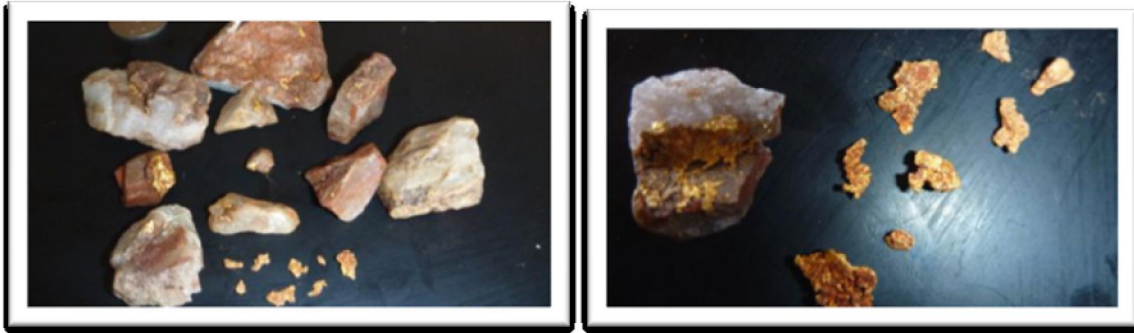


This aerial photograph shows the locations where small peices of gold have been found spread over the Milgoo Mine licence area in recent years. The gold has all been found using metal detectors. The current owner took GPS coordinates at the exact location of each find.



*Not to scale*

**Gold found on the Milgoo Mine lease area by random metal detecting (1.0).**



**Gold found on the Milgoo Mine lease area by random metal detecting (2.0).**



**Some collective panning results after a number of small crushes:**

## **10.0 Statutory Declaration**

The current owner of the Milgoo Mine Lease M58/362 has provided a Statutory Declaration stating that the photos shown above are photographs of gold specimens found on, or panned from material found on, the land area of the Milgoo Mine Lease over the period since the owner's Prospecting Licence PA 58/1487 was issued in September 2010. (See Attachment 6.0.)

## ATTACHMENTS 1.0 to 5.0

1.0 Government Gazette, W.A. May 8, 1936

656

GOVERNMENT GAZETTE, W.A.

[MAY 8, 1936.]

### THE MINING ACT, 1904.

#### NOTICE OF INTENTION TO FORFEIT LEASES FOR NON-PAYMENT OF RENT.

Department of Mines,  
Perth, 28th April, 1936.

IN accordance with Section 97 of "The Mining Act, 1904," notice is hereby given that, unless rent due on the undermentioned Leases be paid on or before the 6th day of June, 1936, it is the intention of the Governor, under the provisions of Section 98 of "The Mining Act, 1904," to forfeit such leases for breach of covenant, viz., non-payment of rent.

M. J. CALANCHINI,  
Under Secretary for Mines.

#### Page 663

ni,

*Mt. Magnet District.*

o,

Gold Mining Leases.

e;

li,

- 1242M—LUCKY HIT: Dallison, Frederick Henry.  
1245M—MILGOO MINE: Moses, Arthur Gilbert (sen.).  
1251M—BROKEN BOND: Crick, John Thomas; Hudson, Sidney John.  
1255M—EDWARD CARSON: Cassey, Andrew; Cassey,

iy.

#### Page 664

*Mt. Magnet District—continued.*

Gold Mining Leases—*continued.*

- 1325M—WINDSOR CASTLE: Moses, Florence Ethel.  
1326M—POSSIBLE: Hurley, Maurice; Cameron, Alexander; Dickie, John; Patten, William.  
1332M—FINE CUT: Robinson, Thomas Selby; Barker, Arthur Thomas

# ATTACHMENT 2.0

## 2.0 Department of Mines Production Tables

Part A: Extract from the 1939 Annual Report from the Department of Mines

"Paynesville ... 1245M ... Milgoo Mine. Total: From 220.50 tons - **527.07 fine ozs**" 1932-39

Murchison Goldfield—Mt. Magnet District.—continued.

Mining Centre.	No. of Lease.	Name.	Ore Treated.	Gold Produced.	Also Alluvial or Dollied.	Production Period.	Remarks.		
Mt. Magnet East continued.	416M	Lady Maud	165.50	173.42	D 4.36	1898-02	} Same ground.		
	1010M	Lady Maud	16.03	13.26	D 10.39	1911			
	471M	Lady Margaret	4.00	5.78	D 21.38	1899-00			
	472M	Lady Margaret West			D .60	1899			
	558M	Maori Chief	79.00	72.33		1901-02			
	381M	Mount Ford	96.00	192.28	D 4.24	1899-02			
	461M	Pioneer	14.00	3.19		1899			
	406M	Sampey's Hidden Secret	3.25	11.11	D 2.66	1898-99			
	382M	South Australian	103.50	73.64	D 248.19	1899-01			
	599M	South Australian	7.50	2.31		1902			
	413M	Surprise	162.00	452.56	A 63.29	1898-02			
	340M	Windsor Castle	4.70	13.04	D 142.05	1898			
	340M, 352M, 451M, 468M	Windsor Consolidated (W.A.) G.Ms., Ltd.	3,606.00	940.36	D 1.83	1900-02			
	Moyagee	940M	Break-of-Day	3.80	3.81			1909	} Same ground.
		1001M	Comet	41.00	134.98			1910	
		1213M	Evelyn	20.70	26.27			1924-25	
		1104M	Kuranaui	200.00	13.59			1914-15	
1298M		Lady Eileen	313.75	54.08		1925			
629M		Little Boulder	70.00	45.59		1903			
690M		Little Boulder	24.00	16.78		1903-04			
748M		Little Boulder	17.50	17.12		1904			
1099M		Moyagee	2,497.80	4,253.47		1914-24			
1217M		Moyagee	227.90	725.35		1928-28			
326M		Louise	295.00	342.88		1898-01			
1387M		Louise	45.00	40.69		1941			
683M, 686M		Louise G.M. Co., N.L.	1,042.00	572.83		1903-06			
973M		Moonlight	152.05	742.73		1910-12			
1081M		Moonlight	87.50	317.08	D 5.08	1914-15			
1299M		Moyagee Central	40.75	53.82		1935			
1401M		Moyagee Light	3.75	5.47	D 18.51	1940			
766M	Ophe	39.00	22.91		1905				
1040M	Peep-O-Day	59.00	230.93		1912				
101M	Waratah	112.50	55.51		1898				
Paynesville	1196M	Elze	56.25	479.68	D 1,434.45	1892-98	} Same ground.		
	1210M	L.P.S.	16.27	42.80	D 25.99	1923-24			
	1246M	Milgoo Mine	220.50	527.07		1932-39			
Winjangoo	1112M	Paynesville View	10.00	6.27	D 147.06	1914-15	} Same ground.		
	1360M	Buccaneer	63.00	20.76	A .99	1937-38			
	1376M, 1371M	Lucky Spot Made Sure	9.00	49.22	D 76.40 D 15.08 D 100.40	1938-39			
Büberstha	1012	Blue Marten	88.00	76.06		1931-32	} Same ground.		
	75, 76, 146, 235	Joker (Yaigoo) G.Ms., Ltd.	554.00	200.07		1897			
	1167	Picata Joker	821.00	215.71		1939-41			
	1139	Blaney's Gold Mine	2,121.50	1,353.21	A 1.27 D 90.94	1937-46			
Carlaminda	434	Carlaminda	265.00	146.20		1899	} Part same ground.		
	230, 26, 27, 228	Dollar G.Ms., Ltd.	6.32	5.69		1897-99			
	433	Carlaminda North	54.00	26.96		1899			
	444	Carlaminda	117.00	59.34		1900			
	338	Gladstone	26.00	17.19		1897-99			
	557	Murchison Reliance	56.00	32.61		1902-08			
	478, 479	Murchison Reliance Leases	38.50	30.30		1902-03			
	478, 479	Murchison Reliance G.Ms., Ltd.	227.50	105.09		1906-07			
	1095	Reliance	1,109.25	337.70	A 1.28 D 3.39	1935-40			
	9, 85, 233	Yaigoo Proprietary G.Ms., Ltd.	157.00	100.85		1897-98			
Fields Find	848	Alma	43.00	6.27		1916-17	} Same ground.		
	752	May Bird	1.00	18.10	D 101.78	1914-15			
	685	May Bird	54.00	92.45	D 33.85	1913-14			
	986	Baldwin	80.00	56.42		1927			
	985	Churchill	70.00	38.45		1927			
	968	Hayes Gold Mine	38.00	30.85	D 5.08	1923-25			
	845	Lliven	N.R.	2.90		1916			
	512	Fairy Dell	11.50	5.23		1904			
	588	Commodore	71.00	67.94	D 7.85	1910-11			
	658	Commodore	477.00	406.26		1912-14			
	850	Commodore	194.50	290.83		1915-21			
	680	Fields Find Extended	2,073.50	1,803.09		1913-19			
	902	Fields Find Extended	31.50	31.35	D 10.38	1921-25			
	414, 441, 442, 443	Fields Reward G.Ms., Ltd.	138.00	266.95		1906-07			
	414, 441, 442, 443, 519	Reward G.Ms., Ltd.	2,469.00	2,761.51	D 60.78	1907-13			
443, 443, 441, 414, 116, 115, 114	Fields Find G.Ms., Ltd.	30,379.00	20,437.49		1898-04				





## ATTACHMENT 3.0

### 3.0 Western Argus Milgoos Mine Production 1936

Western Argus (Kalgoorlie, WA : 1916 - 1938), Tuesday 1 December 1936, page 3

#### NOTES ON THE INDUSTRY

The following notes have been issued by the Mines Department.—  
Mount Magnet District

Mount Magnet Gold Mines, Ltd., during September treated 4740 tons for a total yield of 874 fine oz. of gold. The company also carried on with development work on the Golden Age mine. On the Edward Carson lease a three-head battery was being erected and from the treatment of sands on this lease the lessee obtained 118.95 fine oz. Sampling of the old Morning Star was commenced on the completion of the de-watering of this mine. Development work to test the lode at depth was done on the Black Cat lease. Good crushings were reported from the Lady Jean, 86.12 fine oz. from 4 tons; the Fine Cut, 31.6 fine oz. from 32 tons, and from Wellington's area 13 tons for 41.42 fine oz. At Paynesville a prospecting battery was completed on the Milgoos mine and 15 tons were treated for 42.57 fine oz. At Moyagee, A. R. Donison won 15.61 fine oz. from 12.5 tons of ore.

#### Black Range District

There was no fresh activity reported for September from any of the centres in this district. At Youanmi, the new plant was completed and a trial run commenced early in October, but the results are yet unknown. At Jonesville, the Swan Bitter G.M. Co., N.L., treated 1060 tons for 191.06 fine oz., and the North End 426 tons for 151.24 fine oz. From Birrigin, W. Lee reported crushing 26 tons for 36.06 fine oz., while W. Morris operating at Montague received 55.88 fine oz. from 86 tons.

#### Yalgoo Goldfield

During September the Western Queen G.M. Co., Ltd., shut down their plant in order to instal a new crude oil engine. Their production was 74.86 fine oz. recovered from 180 tons of ore and accumulated tailings. New machinery was being erected on the Royal Standard mine at Yuin. From the treatment

mine at Yuin. From the treatment of tailings, Rothsay Gold Mines, N.L., received 84 fine oz. The principal crushings at Payne's Find were 286 tons for 144.83 fine oz. from the Orchid, and 25 tons for 12.92 fine oz. from the Adeline. The Gnow's Nest Syndicate crushed 62 tons for 24.52 fine oz., while at Bilbertha, M. Kennedy crushed 46 tons from his area for 27.31 fine oz.

National Library of Australia

<http://nla.gov.au/nla.news-article34973304>

## ATTACHMENT 4.0

### 4.0 Geraldton Guardian Paynesville Production 1937/39

10/13/2018

Geraldton Guardian and Express (WA : 1929 - 1947), Tuesday 31 January 1939, page 4

Geraldton Guardian and Express (WA : 1929 - 1947), Tuesday 31 January 1939, page 4

whilst the number in force at the end of the year was 100, as compared with 112 at the end of 1937.

The following figures compare the production of the various centres during 1937 and 1938, ore treated being quoted in long tons and gold won in fine ounces:—

Jumbulyer—1937, 205½ tons for 193.74 ounces; 1938, 240½ tons for 199.98 ounces.

Lennonville—1937, 609.95 tons for 216.49 ounces; 1938, 662½ tons for 481.54 ounces.

Mt. Magnet—1937, 91,713½ tons for 23,393.02 ounces; 1938, 94,379.85 tons for 20,464.28 ounces.

Moyagee—1937, 589 tons for 853.28 ounces; 1938, 347½ tons for 477.06 ounces.

Paynesville—1937, 172½ tons for 66.95 ounces; 1938, 49 tons for 22.90 ounces.

Wynyangoo—1937, 15½ tons for 177.96 ounces; 1938, 75 tons for 277.45 ounces.

#### District Operations

In reviewing operations at the various centres during the year the report states:—

Jumbulyer—Prospectors continued to give this centre a good deal of attention, and a number of good crushings from small rich reefs were treated. The principal producers were the Pan-

95.00 fine ounces of gold. During November last he also took up the old Galtee More lease adjacent to the Empress, on which there is a big low-grade ore deposit, and it is his intention to explore the mine below the old workings. On the Gambler Lass Lease R. J. Seaman and party erected a pump and winch and treated 76½ tons for 62.99 fine ounces of gold over the plates, the sands assaying slightly under the grade of the recovery over the plates. Several runs of the Welcome Battery were conducted to treat ore for the prospectors in the locality, and in addition the treatment of 1,120 tons of accumulated sands yielded 74.19 fine ounces of gold. In addition to these P.A. 2312M (J. Pavlicic and party) yielded 61.17 fine ounces from 145 tons and P.A. 2459M (R. Reinholdsten and party) returned 19.91 fine ounces from 195 tons.

Mt. Magnet.—The production of 94,379.85 tons for 20,464.28 fine ounces from this centre represents a proportion of 93 per cent. of the production for the whole of the district, and the decrease for the year is entirely due to the decrease in the grade of the ore, which was from 5.10 dwts. per ton to 4.34 dwts. per ton. Mt. Magnet Gold Mines Limited, which is working the Hill 60 and St. George Gold Mines, situated about one mile south-west of



## ATTACHMENT 5.0

### 5.0 Daily Telegraph Gold P.A.'s Granted 1942

10/13/2018

Daily Telegraph and North Murchison and Pilbarra Gazette (WA : 1920 - 1947), Saturday 21 November 1942, page 4

Daily Telegraph and North Murchison and Pilbarra Gazette (WA : 1920 - 1947), Saturday 21 November 1942, page 4

## Warden's Court

### Mineral P.A.'s Adjourned

The November Sitting of the Mt. Magnet Warden's Court took place on Monday morning, over which Mr K. H. Parker presided.

With the search for minerals now more intensified than ever before in the history of the nation, the four applications for prospecting areas for mineral in the Yalgoo district were of particular interest. All were adjourned, however, pending receipt of the report from the Inspector for Mines. The applications were as follows:—

Phillip William Nevill, 2322, 24 acres, for scheelite and bismuth at Noongal

Frank Ambrose Moss, 2323, 24 acres, for molybdenum at Mulgine

Chester Arthur Morrow, 2324, 20 acres, for molybdenum at Mulgine

Noel Boucher Hassell, 2325, 24 acres, for wolfram, at Bonnie Venture

### "Apples" Lease Exemption

Application was made by Alexander McKay for 6 months' total exemption on G.M.L. 1074B, known as the "Apples" lease, and situated at Sandstone.

Mr A. G. Dewar, who appeared as agent for Mr McKay, stated that the ground for the application was "unable to obtain labour to work the lease." Although the applicant was a working miner, he was unable to work the mine on his own as he had reached water level (60ft) and all future development and mining would need to be below water level. No useful surface or other work could be done. There had been no previous exemption on the property. Mr McKay had been ordered by his

previous exemption on the property. Mr McKay had been ordered by his doctor to cease mining work for 2 to 3 months. During the past 12 months 60ft shaft sinking, 65ft driving and a considerable amount of stoping had been done, and 61 tons had been crushed for 168 oz

The Warden said he would recommend the exemption, to start from November 16

A. M. Nevill applied for G.M.L. 1203, at Noongal, Yalgoo district, which was recommended subject to survey

### Gold P.A.'s Granted

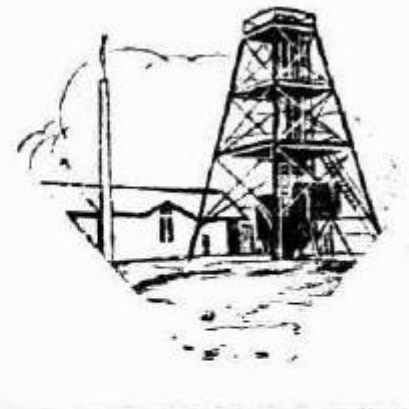
Thomas William Hesford, 2320, at Leake's Find

Adam Marchei, 2321, at Goodingnow

Horace Jewell, 2962M, at Boogardie  
Arthur Giloert Moses, 2964M, at Milgo Hill

Jackom Della Bona, 2965M, at Magnet

Amelia Ann Males, 2963M, at Lennonville



<http://nla.gov.au/nla.news-article211656032>

<https://trove.nla.gov.au/newspaper/rendition/nla.news-article211656032,3.html?followup=d704c539829f735954d46e02e97d6d24&print=true>

1/1

**ATTACHMENT 6.0**

**Statutory Declaration by Owner of Mining Lease M58/362**

WESTERN AUSTRALIA

OATHS, AFFIDAVITS AND STATUTORY DECLARATIONS ACT 2005

STATUTORY DECLARATION

I, **Ian John McNally**, PO BOX 501, MOUNT MAGNET, the current holder of Mining Lease 58/362, described as the Milgoos Mine, granted by the Government of Western Australia on the 20th August 2018 sincerely declare as follows:-

1. All information contained within the document headed Milgoos Mine, Mount Magnet Mining District dated October 2018 and produced by myself and others is to the best of my knowledge true and correct.
2. The photographs of gold samples shown herein are photographs of gold found on the Milgoos Mine lease area and of gold produced on the Milgoos Mine from a small crushing and subsequent wash panning process.

This declaration is true and I know that it is an offence to make a declaration knowing that it is false in a material particular.

This declaration is made under the *Oaths, Affidavits and Statutory Declarations Act 2005*

at.....  
{place}

.....  
{date}

in the presence of -

by.....  
{Signature of person making the declaration}

.....  
{Signature of authorised witness}

.....

.....  
{Name of authorised witness and qualification as such a witness}

## **FURTHER NOTES:**

### **1.0 MOSES Family**

From historical search

The CALFE family relocated to Victoria where Francis Calfe born 1862 married Arthur Gilbert Moses at Yea in Victoria.

(Arthur Gilbert Moses b. 1866.Linton Victoria

Died 1941 Mt Magnet West Australia.)

Arthur was using his stepfather's name of Denmark.

His father (Edward Samuel MOSES) died when Arthur was only months old. Arthur reverted to his birth surname in 1893.

The couple had 6 children.

Catherine Sophia b.1888 d. 1964 originally registered as "Denmark" at Carlton Victoria

Edward Samuel b.1893 d. 1948 born Irwin District West Australia

Alice Anne b. 1895 d. 1896 Mt Magnet West Australia

Mary Magnet b.1895 d. 1896 Mt Magnet West Australia.

Gilbert Owen b. 1898 d, 1975 b. Mt Magnet W.A.

Arthur George b.1900 d. 1970 b Paynesville W.A. *NMC NOTE: Probably GILBERT not GEORGE see Funeral/Burial notice below with Florence Ethel.*

Catherine Sophia(Denmark) Moses married William George Stonehouse.1942 Murchison W.A.

7. children:

Frances C. b. 1919 d . ?

Elizabeth Jean. b.1919 d.Nov 2005

Wilma Edna. b.1921 d. 26 Dec 1999

Arthur Edward b. 1923 d.15 May 1999

Joan E. b. 1924 d. ?

Sophia Louise b. 8 Oct 1926 d. 23 June 2005

Ruth. b after 1926? d. infant.?

### **2.0 REFERENCES and SOURCES USED IN RESEARCH**

Multiple Trove search of Newspapers

Department of Mines WA Annual Reports to the WA Parliament from the mid 1890s to recent dates

Various websites for general research

WA Government Gazettes various dates

Photographs from the Milgoon Mining Lease holder

Google Maps

Kulin.wa.gov.au for Statutory Declaration template

3.0 SONS of GWALIA Mine Plan 1930 (Department of Mines Annual Report 1930)

